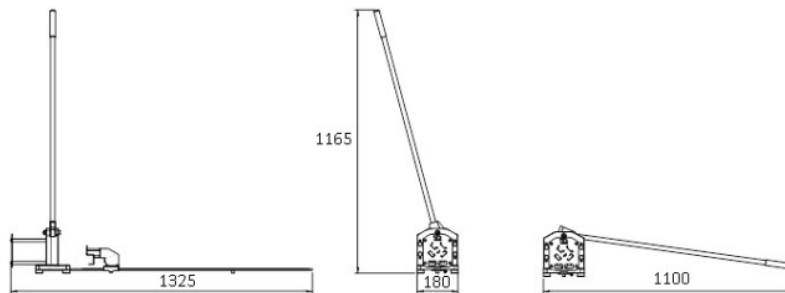
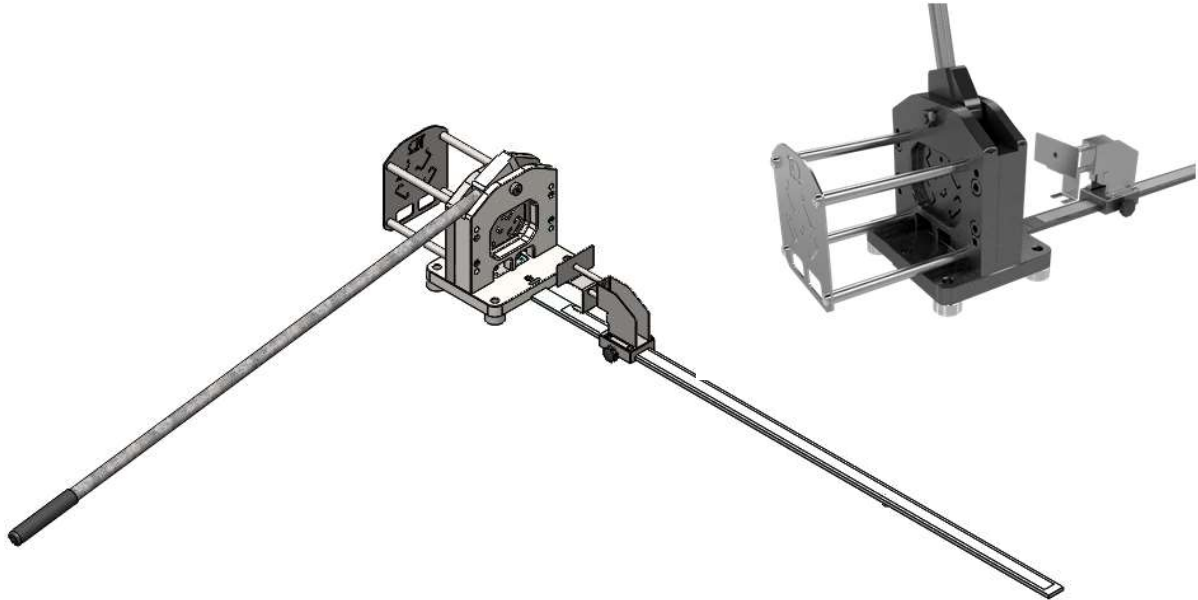


Product Datasheet

UTD3005

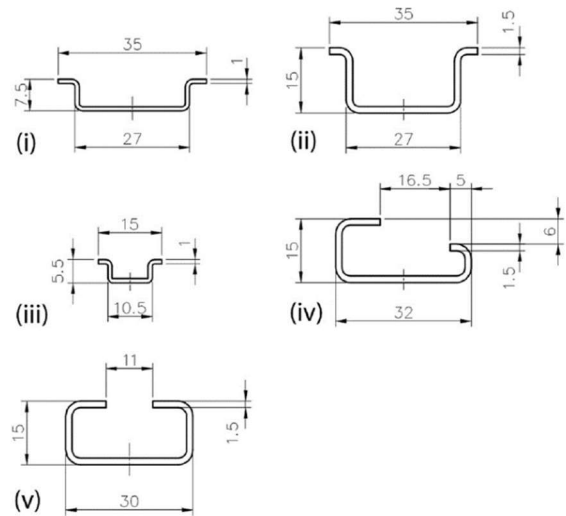


Main

Family	DIN rails and profiles
Version	DIN rail cutting tool
Code	UTD3005
Reference	UTD-T-P 03
Number per package	1
Weight (kg)	16.5

Cutting

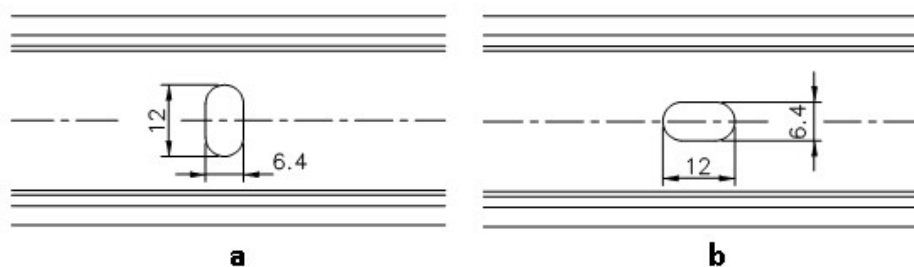
- Symmetrical DIN rails type “**Ω**”
15x5.5 (iii) – 35x7.5 (i) – 35x15 (ii)
- Asymmetrical DIN rail type “**G**”
32x15 (iv)
- Profile type “**C**”
30x15 (v)



Punching with elongated holes

- Symmetrical DIN rails type “**Ω**”
35x7.5 (i) – 35x15 (ii)

Elongated hole 12x6.4 mm perpendicular to (a) or along (a) the axis of the rail.



Supplied with rule up to 1000 mm.

The use of this tool with DIN rails not present in the Teknomega catalog is not guaranteed.

Do not disassemble any component of the equipment without prior approval or instructions from Teknomega personnel.

In case of needs, please contact Teknomega customer service referring to the serial number of the equipment.

Please contact Teknomega for non-specified tolerances.