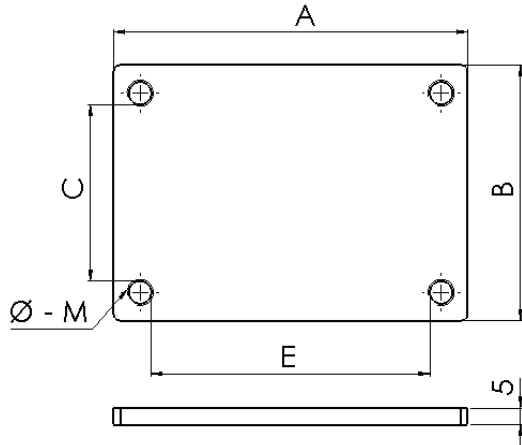


Product Datasheet

SBR1000



Main

Family	Accessories for busbars
Code	SBR1000
Reference	SBR 50x24
Number per package	4
E (mm)	52
C (mm)	26
A (mm)	77
B (mm)	51
Ø - M (mm)	8.5 - M8
Torque (Nm)	10

Technical Features

Material: Galvanized steel

Max. tightening thickness: 20 mm (with 8.8 screws of length 30 mm supplied)

Compliant with: EN 60998-1

Plates thickness: 5 mm

Advantages

Connection without drilling and bolting.

Easy and quick use even on already mounted bar system.



Please contact Teknomega for non-specified tolerances.