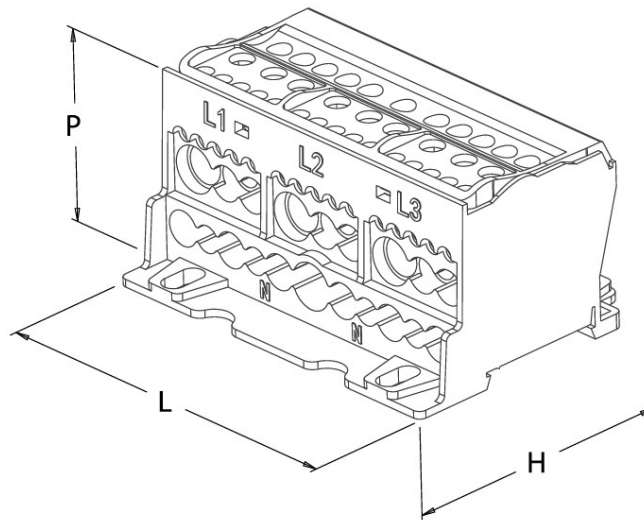


## Product Datasheet

### RPQ1025



#### Main

Family	Distribution Blocks
Version	4 Poles 125 A
Code	RPQ1025
Reference	RPQ C-125
Number per package	1
L (mm)	98
H (mm)	75
P (mm)	49
Fix. hole space I (mm)	55-70
Weight (g)	320
Continuous working temperature (°C)	Max +85 °C

## Technical Features

**Insulating body:** PA 6, UL 94-V0, gray RAL 7035

**Cover:** PC, UL 94-V2, transparent yellow, removable with flat head screwdriver

**Conduction block:** Brass

**Screws:** Galvanized steel

Insulation between phases

Index protection IP20

Quick hook-up on DIN rails

**Compliant with standard IEC 60947-7-1**

## Advantages

Easy connection: inputs are separated from the outputs

Wiring from both sides with cable with or without terminal

Easy inspection of the wiring cable and verification of the connections

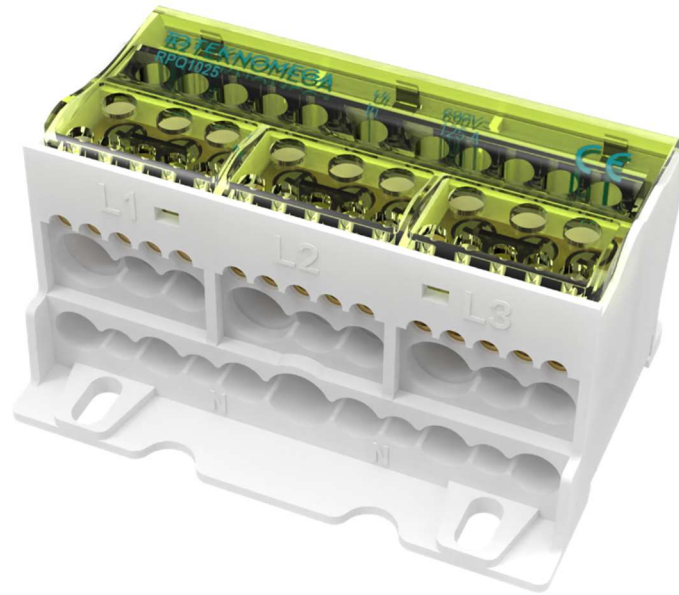
## Technical Data

Type	4 Poles, 7 Outputs					
In: 125 A	No.	Dim. (mm)	Stripped wire (mm <sup>2</sup> )	Wire with ferrule (mm <sup>2</sup> )	Torque (Nm)	Screw
Phase IN →	1	∅ 8.5	2.5 to 35	1.5 to 25	2	M5
Phase ← OUT	2	∅ 7	1.5 to 16	1.5 to 16	2	M5
Phase ← OUT	5	∅ 4.5	1.5 to 6	0.5 to 6	1.2	M4
Neutral IN →	1	∅ 8.5	6 to 35	4 to 25	2	M5
Neutral ← OUT	6	∅ 7	1.5 to 16	1.5 to 16	2	M5
Neutral ← OUT	4	∅ 5.5	1.5 to 10	0.5 to 10	2	M5
I <sub>cw</sub> (kA)	4.2					
I <sub>pk</sub> (kA)	24					
U <sub>i</sub> (V)	1000					

**I<sub>cc pk</sub>** = Short-circuit current peak value expressed in kA

**I<sub>cw</sub>** = Effective value of short-circuit current, duration equal to 1 second, expressed in kA as per standard IEC 60947-7-1

**U<sub>i</sub>** = Nominal Insulation voltage



Please contact Teknomega for non-specified tolerances.