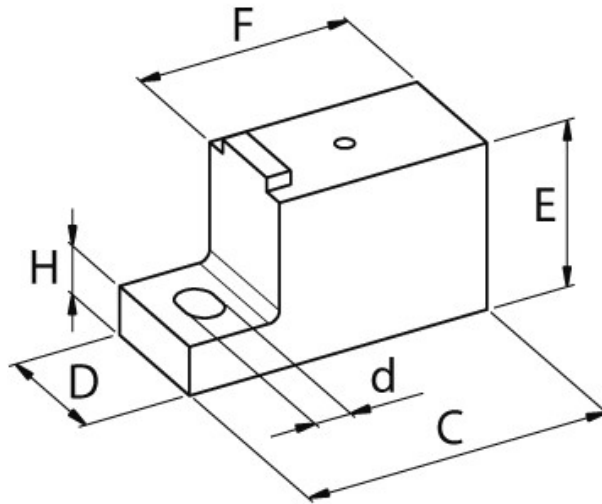


## Product Datasheet

### MRS7010



#### Main

Family	Earthing and Neutral Terminals
Version	Terminal supports
Code	MRS7010
Reference	MRS-S 9x19
Number per package	50
Terminal cross-section *A x B	9 x 19
C (mm)	44
D (mm)	19
E (mm)	24
F (mm)	30
H (mm)	7
d (mm)	5.2

\* Terminal cross-section of brass terminals.

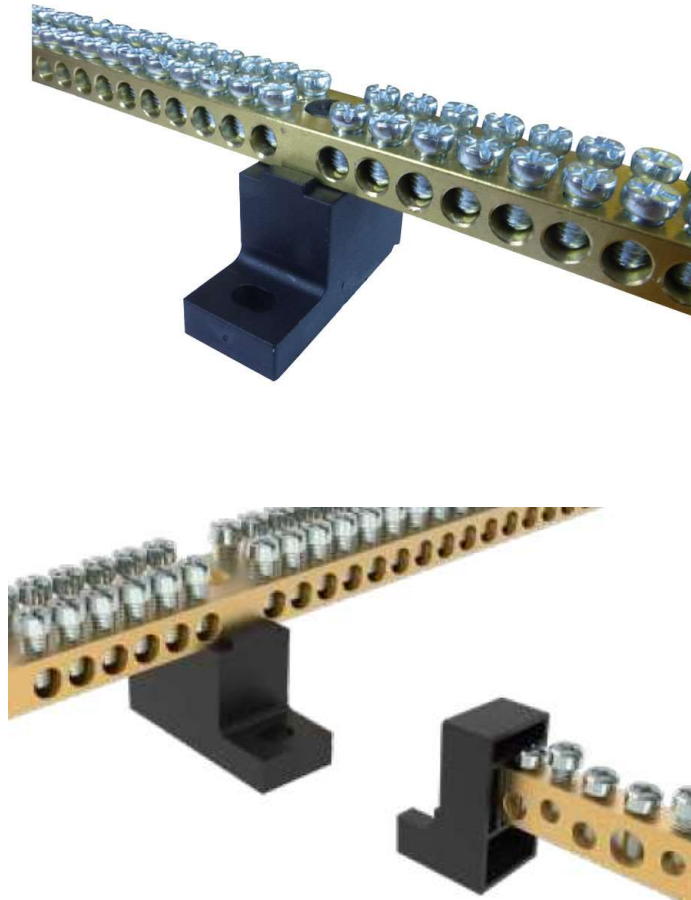
## Technical Features

**Material:** Polyamide 6

Self-extinguishing: UL-94 V0

Complete with fixing screw

Compatible with MRS3000-MRS3005-MRS3010



Please contact Teknomega for non-specified tolerances.