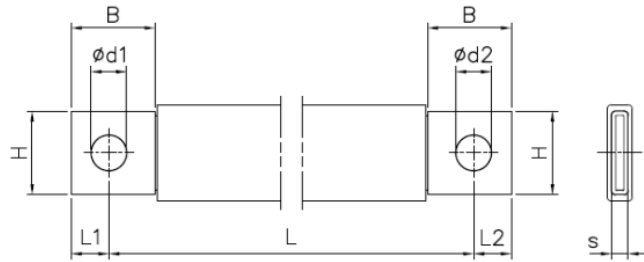
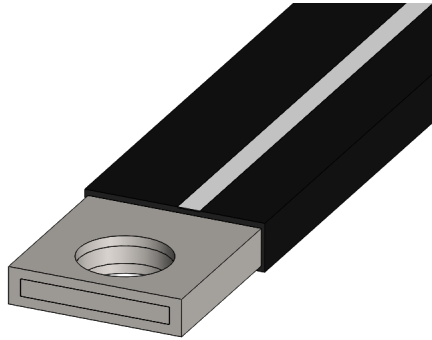


Product Datasheet

JLK1180



Main

| | | |
|----------------------------------|--|---------------------|
| Family | Insulated copper braided shunts | |
| Version | J-link | |
| Code | JLK1180 | |
| Reference | JLK 85-1030 | |
| Number per package | 2 | |
| Weight (kg) | 0.95 | |
| L: Hole to hole length (mm) | 1030 ^{+5.6} _{-0.6} | |
| Cross section (mm ²) | 85 | |
| Dimensions (mm) | B = 25 ^{+0.5} _{-0.5} , H = 24 ^{+0.5} _{-0.5} , L1 = 9.5 ^{+0.3} _{-0.3} , L2 = 11 ^{+0.3} _{-0.3} , d1=8.5 ^{+0.3} _{-0.3} , d2=10.5 ^{+0.3} _{-0.3} , s=6.5 ^{+0.5} _{-0.5} | |
| In (A) vs ΔT (°C) | Rated Intensity (A) | Temperature rise ΔT |
| | 304 | 35 °C |
| | 346 | 45 °C |
| | 383 | 55 °C |
| | 431 | 70 °C |

Technical Features

Conductor

Tinned electrolytic copper braid Cu-ETP 99.90%

Standard wire: 0.2 mm

Terminal in tinned copper tube

Insulation

PVC Compound

Black color with a white line

Self-extinguishing UL 94-V0

Thickness: 1.9 ± 0.1 mm

Max. elongation: 365%

Hardness: 80 Shore A

Tensile strength: 19 MPa

Class II according to Par. 8.4.4 IEC 61439-1

Recyclable

Finished Product

Dielectric rigidity: 20 kV/mm

Rated voltage: 1000 V AC/1500 V DC

Working temperature: -40 °C to 105 °C

In vs. ΔT

I_n = Rated current A

ΔT = Temperature rise °C

Standard IEC 61439-1

Reference Room temperature is 35 °C

For derating coefficient for the use of bars in parallel please refer to the catalogue.

Please contact Teknomega for non-specified tolerances.