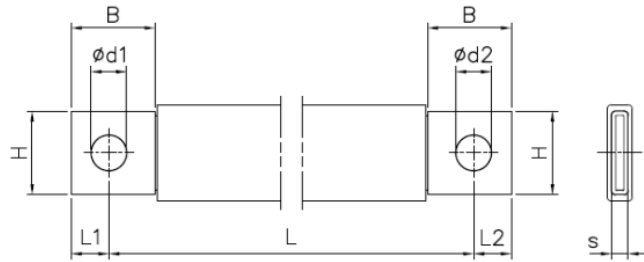
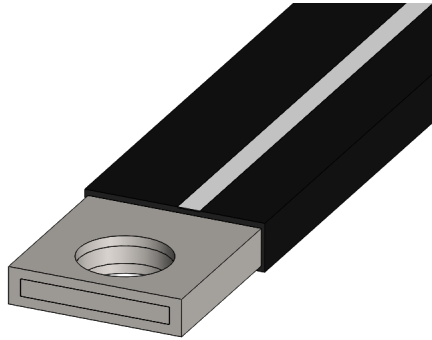


Product Datasheet

JLK1074



Main

Family	Insulated copper braided shunts	
Version	J-link	
Code	JLK1074	
Reference	JLK 50-1030	
Number per package	10	
Weight (kg)	0.65	
L: Hole to hole length (mm)	1030 ^{+5.6} _{-0.6}	
Cross section (mm ²)	50	
Dimensions (mm)	B = 20 ^{+0.5} _{-0.5} , H = 20 ^{+0.5} _{-0.5} , L1 = 9 ^{+0.3} _{-0.3} , L2 = 9.5 ^{+0.3} _{-0.3} , d1=8.5 ^{+0.3} _{-0.3} , d2=10.5 ^{+0.3} _{-0.3} , s=5 ^{+0.5} _{-0.5}	
In (A) vs ΔT (°C)	Rated Intensity (A)	Temperature rise ΔT
	214	35 °C
	244	45 °C
	270	55 °C
	304	70 °C

Technical Features

Conductor

Tinned electrolytic copper braid Cu-ETP 99.90%

Standard wire: 0.2 mm

Terminal in tinned copper tube

Insulation

PVC Compound

Black color with a white line

Self-extinguishing UL 94-V0

Thickness: 1.9 ± 0.1 mm

Max. elongation: 365%

Hardness: 80 Shore A

Tensile strength: 19 MPa

Class II according to Par. 8.4.4 IEC 61439-1

Recyclable

Finished Product

Dielectric rigidity: 20 kV/mm

Rated voltage: 1000 V AC/1500 V DC

Working temperature: -40 °C to 105 °C

In vs. ΔT

I_n = Rated current A

ΔT = Temperature rise °C

Standard IEC 61439-1

Reference Room temperature is 35 °C

For derating coefficient for the use of bars in parallel please refer to the catalogue.

Please contact Teknomega for non-specified tolerances.