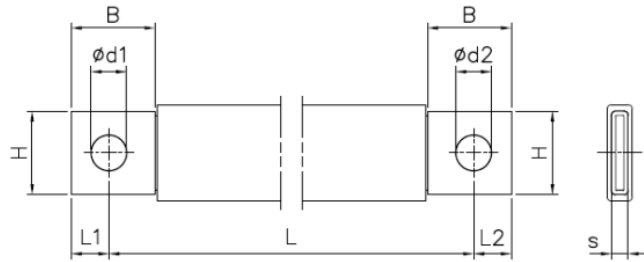
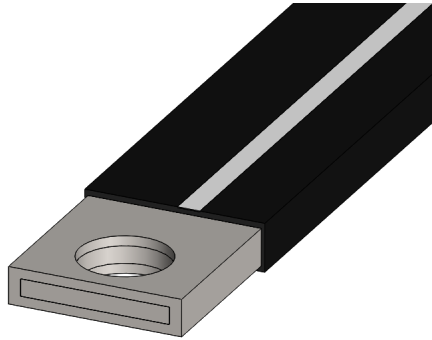


Product Datasheet

JLK1040



Main

| | | |
|----------------------------------|---|-----------------------------|
| Family | Insulated copper braided shunts | |
| Version | J-link | |
| Code | JLK1040 | |
| Reference | JLK 35-530 | |
| Number per package | 10 | |
| Weight (kg) | 0.27 | |
| L: Hole to hole length (mm) | $530^{+3.6}_{-0.6}$ | |
| Cross section (mm ²) | 35 | |
| Dimensions (mm) | $B = 20^{+0.5}_{-0.5}$, $H = 20^{+0.5}_{-0.5}$, $L1 = 9^{+0.3}_{-0.3}$, $L2 = 9.5^{+0.3}_{-0.3}$, $d1 = 8.5^{+0.3}_{-0.3}$, $d2 = 10.5^{+0.3}_{-0.3}$, $s = 4.9^{+0.5}_{-0.5}$ | |
| In (A) vs ΔT (°C) | Rated Intensity (A) | Temperature rise ΔT |
| | 176 | 35 °C |
| | 200 | 45 °C |
| | 222 | 55 °C |
| | 249 | 70 °C |

Technical Features

Conductor

Tinned electrolytic copper braid Cu-ETP 99.90%

Standard wire: 0.2 mm

Terminal in tinned copper tube

Insulation

PVC Compound

Black color with a white line

Self-extinguishing UL 94-V0

Thickness: 1.9 ± 0.1 mm

Max. elongation: 365%

Hardness: 80 Shore A

Tensile strength: 19 MPa

Class II according to Par. 8.4.4 IEC 61439-1

Recyclable

Finished Product

Dielectric rigidity: 20 kV/mm

Rated voltage: 1000 V AC/1500 V DC

Working temperature: -40 °C to 105 °C

In vs. ΔT

I_n = Rated current A

ΔT = Temperature rise °C

Standard IEC 61439-1

Reference Room temperature is 35 °C

For derating coefficient for the use of bars in parallel please refer to the catalogue.

Please contact Teknomega for non-specified tolerances.