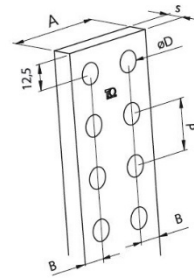
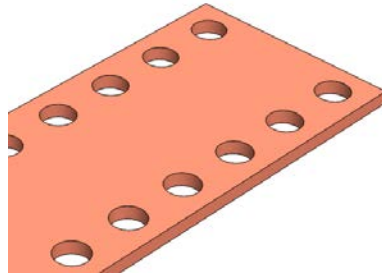


## Product Datasheet BRP1045



### Main

Family	Copper and Aluminium busbars
Version	Prepunched copper bars
Code	BRP1045
Reference	BRP 100X10
Number per package	2
Weight (kg)	14.40
A (mm)	100
s (mm)	10
P (mm)	25
ØD (mm)	10.5
B (mm)	12.5
Section (mm <sup>2</sup> )	1000

In (A) vs $\Delta T^*$	In (A)	$\Delta T$
	1633	35 °C
	<b>2102</b>	<b>55 °C</b>
	2402	70 °C
	3001	105 °C

\*Table of ampacities (A) are based on temperature rise  $\Delta T$  with reference room temperature of 35 °C

### Technical Characteristics

Electrolytic copper Cu-ETP 99.90%

Rounded corners

Resistivity: 0.0172  $\Omega$  mm<sup>2</sup>/m

Density: 8.9 kg/dm<sup>3</sup>

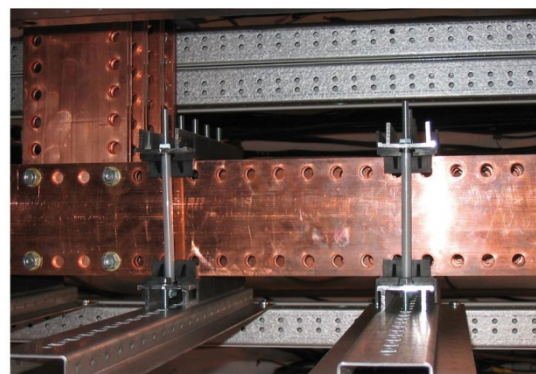
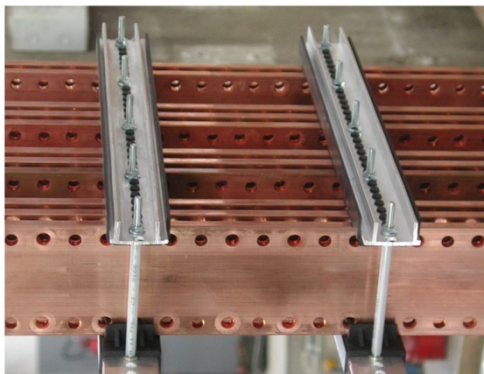
### Advantages

#### **Prepunched and threaded copper bars**

Ready to use

No need for punching tools

Wiring time savings



For derating coefficient for the use of bars in parallel please refer to the catalogue.

Please contact Teknomega for non-specified tolerances.