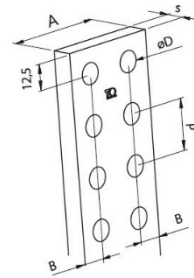
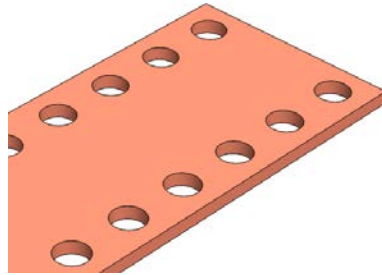


Product Datasheet

BRP1040



Main

Family	Copper and Aluminium busbars
Version	Prepunched copper bars
Code	BRP1040
Reference	BRP 80X10
Number per package	2
Weight (kg)	11.30
A (mm)	80
s (mm)	10
P (mm)	25
ØD (mm)	10.5
B (mm)	12.5
Section (mm ²)	800

In (A) vs ΔT^*	In (A)	ΔT
	1370	35 °C
	1762	55 °C
	2013	70 °C
	2511	105 °C

*Table of ampacities (A) are based on temperature rise ΔT with reference room temperature of 35 °C

Technical Characteristics

Electrolytic copper Cu-ETP 99.90%

Rounded corners

Resistivity: 0.0172 Ω mm²/m

Density: 8.9 kg/dm³

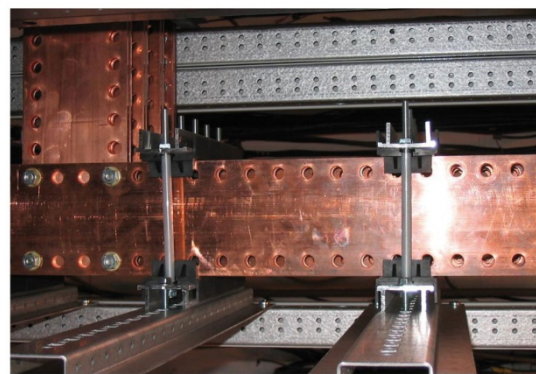
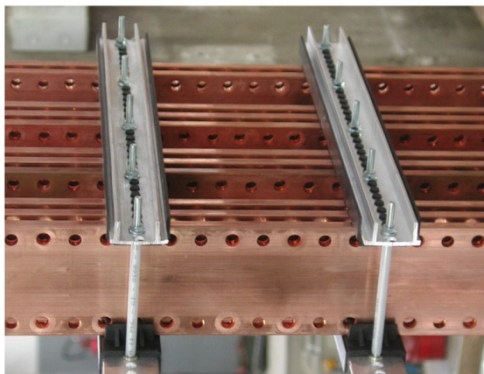
Advantages

Prepunched and threaded copper bars

Ready to use

No need for punching tools

Wiring time savings



For derating coefficient for the use of bars in parallel please refer to the catalogue.

Please contact Teknomega for non-specified tolerances.