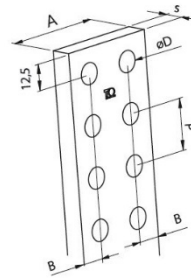
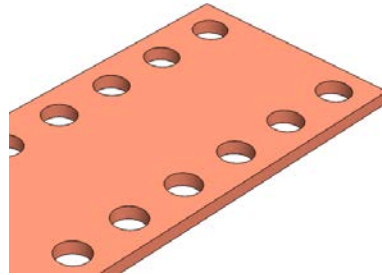


Product Datasheet BRP1035



Main

Family	Copper and Aluminium busbars
Version	Prepunched copper bars
Code	BRP1035
Reference	BRP 60X10
Number per package	2
Weight (kg)	8.79
A (mm)	60
s (mm)	10
P (mm)	25
ØD (mm)	10.5
B (mm)	12.5
Section (mm ²)	600

In (A) vs ΔT^*	In (A)	ΔT
	1094	35 °C
	1406	55 °C
	1605	70 °C
	1999	105 °C

*Table of ampacities (A) are based on temperature rise ΔT with reference room temperature of 35 °C

Technical Characteristics

Electrolytic copper Cu-ETP 99.90%

Rounded corners

Resistivity: 0.0172 Ω mm²/m

Density: 8.9 kg/dm³

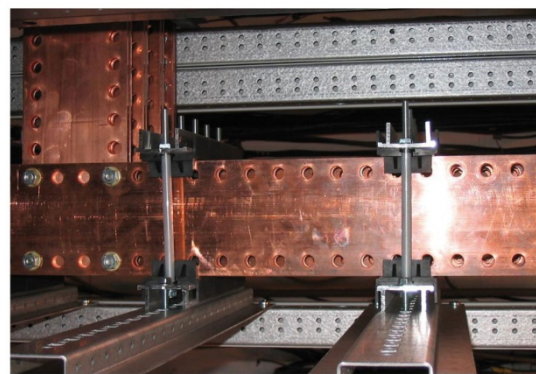
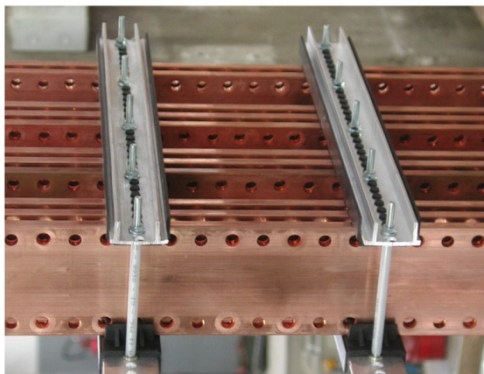
Advantages

Prepunched and threaded copper bars

Ready to use

No need for punching tools

Wiring time savings



For derating coefficient for the use of bars in parallel please refer to the catalogue.

Please contact Teknomega for non-specified tolerances.