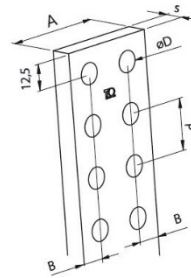
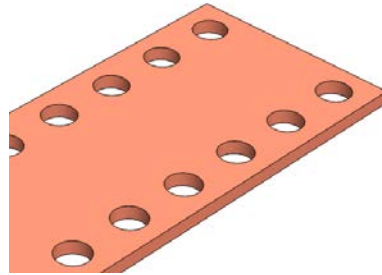


## Product Datasheet

### BRP1030



#### Main

Family	Copper and Aluminium busbars
Version	Prepunched copper bars
Code	BRP1030
Reference	BRP 50X10
Number per package	2
Weight (kg)	6.70
A (mm)	50
s (mm)	10
P (mm)	25
ØD (mm)	10.5
B (mm)	12.5
Section (mm <sup>2</sup> )	500

In (A) vs ΔT*	In (A)	ΔT
	950	35 °C
	<b>1220</b>	<b>55 °C</b>
	1392	70 °C
	1731	105 °C

\*Table of ampacities (A) are based on temperature rise ΔT with reference room temperature of 35 °C

### Technical Characteristics

Electrolytic copper Cu-ETP 99.90%

Rounded corners

Resistivity: 0.0172  $\Omega$  mm<sup>2</sup>/m

Density: 8.9 kg/dm<sup>3</sup>

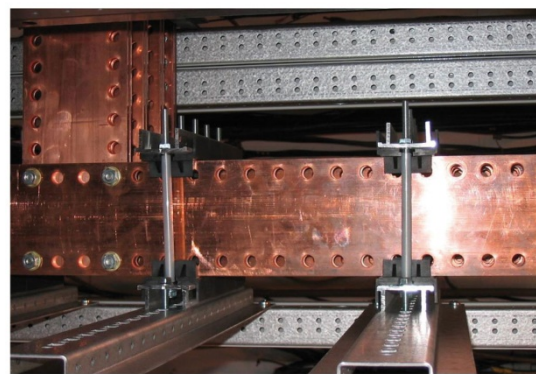
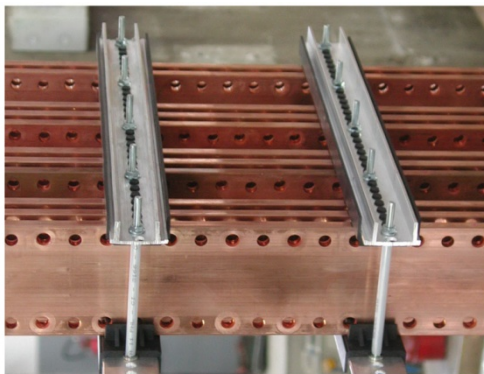
### Advantages

#### **Prepunched and threaded copper bars**

Ready to use

No need for punching tools

Wiring time savings



For derating coefficient for the use of bars in parallel please refer to the catalogue.

Please contact Teknomega for non-specified tolerances.