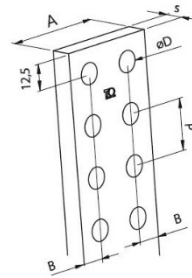
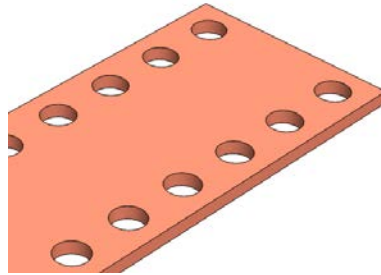


Product Datasheet

BRP1005



Main

| | | | |
|----------------------------|------------------------------|--------------|--|
| Family | Copper and Aluminium busbars | | |
| Version | Prepunched copper bars | | |
| Code | BRP1005 | | |
| Reference | BRP 50X5 | | |
| Number per package | 2 | | |
| Weight (kg) | 3.39 | | |
| A (mm) | 50 | | |
| s (mm) | 5 | | |
| P (mm) | 25 | | |
| ØD (mm) | 10.5 | | |
| B (mm) | 12.5 | | |
| Section (mm ²) | 250 | | |
| In (A) vs ΔT* | In (A) | ΔT | |
| | 649 | 35 °C | |
| | 833 | 55 °C | |
| | 949 | 70 °C | |
| | 1178 | 105 °C | |

*Table of ampacities (A) are based on temperature rise ΔT with reference room temperature of 35 °C

Technical Characteristics

Electrolytic copper Cu-ETP 99.90%

Rounded corners

Resistivity: 0.0172 Ω mm²/m

Density: 8.9 kg/dm³

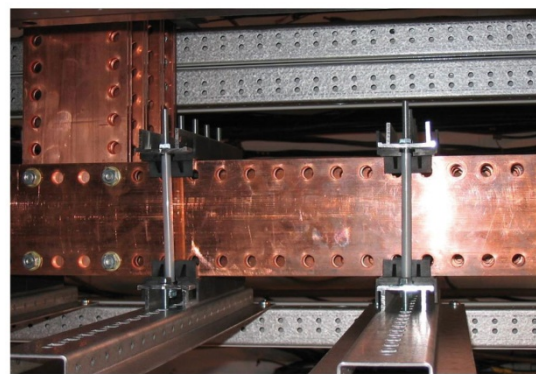
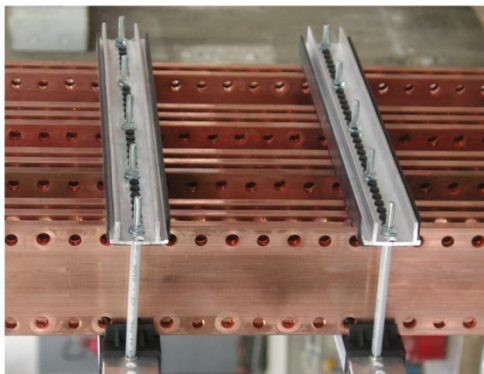
Advantages

Prepunched and threaded copper bars

Ready to use

No need for punching tools

Wiring time savings



For derating coefficient for the use of bars in parallel please refer to the catalogue.

Please contact Teknomega for non-specified tolerances.