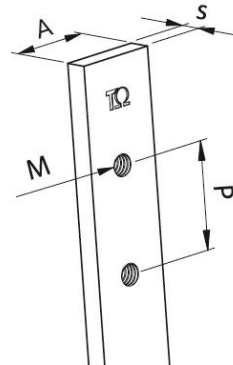
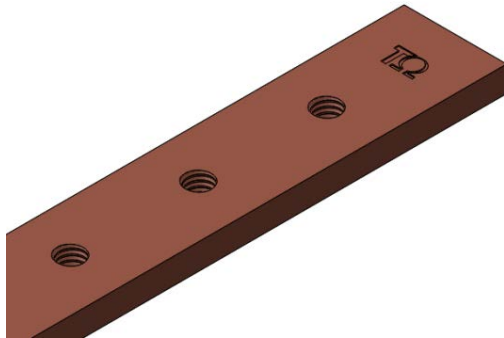


# Product Datasheet

## BRF1047



### Main

Family	Copper and Aluminium busbars		
Version	Threaded copper bars		
Code	BRF1047		
Reference	BRF 30X10X2000		
Number per package	4		
Weight (kg)	4.98		
Thickness (mm)	10		
Length (mm)	2000		
Dimensions (mm)	A = 30	s = 10	P = 25
Bolt size	M8		
Section (mm <sup>2</sup> )	300		

In (A) vs $\Delta T^*$	In (A)	$\Delta T$
	643	35 °C
	<b>825</b>	<b>55 °C</b>
	940	70 °C
	1166	105 °C

\*Table of ampacities (A) are based on temperature rise  $\Delta T$  with reference room temperature of 35 °C

### Technical Characteristics

Electrolytic copper Cu-ETP 99.90%

Rounded corners

Resistivity: 0.0172  $\Omega$  mm<sup>2</sup>/m

Density: 8.9 kg/dm<sup>3</sup>

### Advantages

#### **Prepunched and threaded copper bars**

Ready to use

No need for punching tools

Wiring time savings



For derating coefficient for the use of bars in parallel please refer to the catalogue.

Please contact Teknomega for non-specified tolerances.