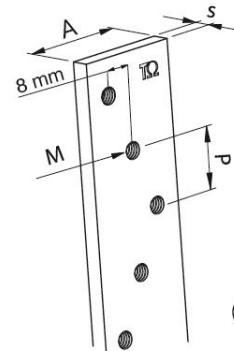
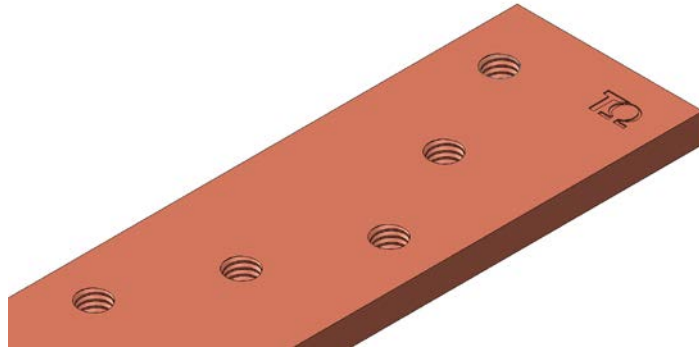


Product Datasheet

BRF1041



BRF1041
(staggered hole version)

Main

Family	Copper and Aluminium busbars		
Version	Threaded copper bars		
Code	BRF1041		
Reference	BRF 32X5X2000-W		
Number per package	4		
Weight (kg)	2.65		
Thickness (mm)	5		
Length (mm)	2000		
Dimensions (mm)	A = 32	s = 5	P = 17.5
Bolt size	M6		
Section (mm ²)	160		

In (A) vs ΔT^*	In (A)	ΔT
	448	35 °C
	575	55 °C
	655	70 °C
	811	105 °C

*Table of ampacities (A) are based on temperature rise ΔT with reference room temperature of 35 °C

Technical Characteristics

Electrolytic copper Cu-ETP 99.90%

Rounded corners

Resistivity: 0.0172 Ω mm²/m

Density: 8.9 kg/dm³

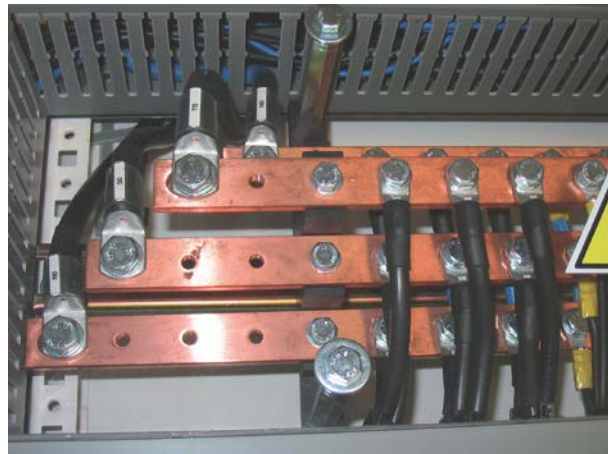
Advantages

Prepunched and threaded copper bars

Ready to use

No need for punching tools

Wiring time savings



For derating coefficient for the use of bars in parallel please refer to the catalogue.

Please contact Teknomega for non-specified tolerances.