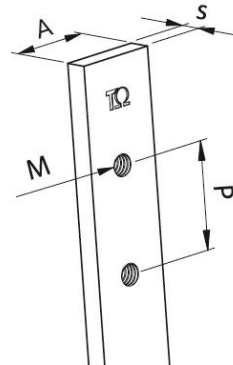
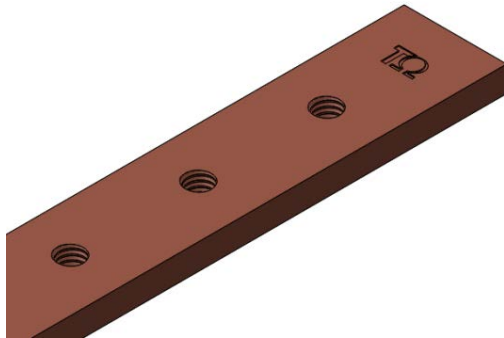


Product Datasheet

BRF1036



Main

Family	Copper and Aluminium busbars		
Version	Threaded copper bars		
Code	BRF1036		
Reference	BRF 20X5X2000 PC		
Number per package	4		
Weight (kg)	1.6		
Thickness (mm)	5		
Length (mm)	2000		
Dimensions (mm)	A = 20	s = 5	P = 20
Bolt size	M6		
Section (mm ²)	100		

In (A) vs ΔT^*	In (A)	ΔT
	307	35 °C
	393	55 °C
	448	70 °C
	554	105 °C

*Table of ampacities (A) are based on temperature rise ΔT with reference room temperature of 35 °C

Technical Characteristics

Electrolytic copper Cu-ETP 99.90%

Rounded corners

Resistivity: 0.0172 Ω mm²/m

Density: 8.9 kg/dm³

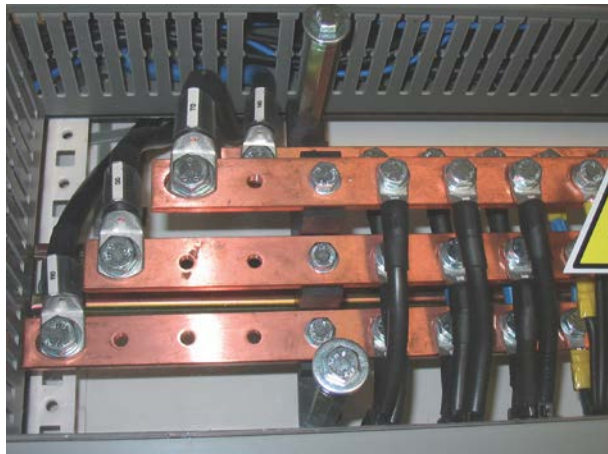
Advantages

Prepunched and threaded copper bars

Ready to use

No need for punching tools

Wiring time savings



For derating coefficient for the use of bars in parallel please refer to the catalogue.

Please contact Teknomega for non-specified tolerances.