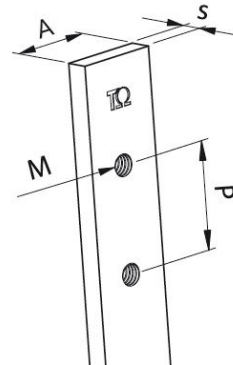
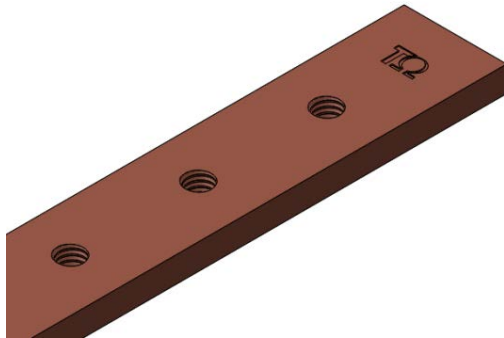


Product Datasheet

BRF1016



Main

Family	Copper and Aluminium busbars		
Version	Threaded copper bars		
Code	BRF1016		
Reference	BRF 25X4X1000		
Number per package	4		
Weight (kg)	0.80		
Thickness (mm)	4		
Length (mm)	1000		
Dimensions (mm)	A = 25	s = 4	P = 25
Bolt size	M6		
Section (mm ²)	100		

In (A) vs ΔT^*	In (A)	ΔT
	322	35 °C
	412	55 °C
	469	70 °C
	581	105 °C

*Table of ampacities (A) are based on temperature rise ΔT with reference room temperature of 35 °C

Technical Characteristics

Electrolytic copper Cu-ETP 99.90%

Rounded corners

Resistivity: 0.0172 Ω mm²/m

Density: 8.9 kg/dm³

Advantages

Prepunched and threaded copper bars

Ready to use

No need for punching tools

Wiring time savings



For derating coefficient for the use of bars in parallel please refer to the catalogue.

Please contact Teknomega for non-specified tolerances.