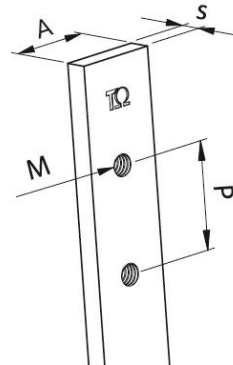
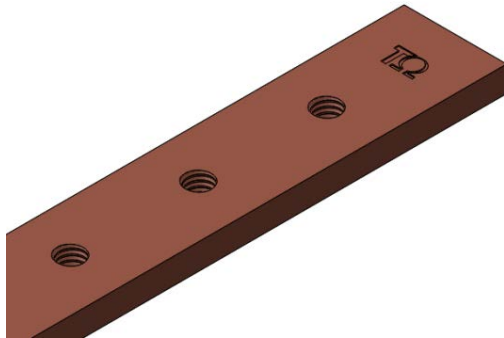


# Product Datasheet

## BRF1010



### Main

Family	Copper and Aluminium busbars		
Version	Threaded copper bars		
Code	BRF1010		
Reference	BRF 15x5x1000		
Number per package	4		
Weight (kg)	0.64		
Thickness (mm)	5		
Length (mm)	1000		
Dimensions (mm)	A = 15	s = 5	P = 25
Bolt size	M6		
Section (mm <sup>2</sup> )	75		

In (A) vs $\Delta T^*$	In (A)	$\Delta T$
	245	35 °C
	<b>314</b>	<b>55 °C</b>
	357	70 °C
	442	105 °C

\*Table of ampacities (A) are based on temperature rise  $\Delta T$  with reference room temperature of 35 °C

### Technical Characteristics

Electrolytic copper Cu-ETP 99.90%

Rounded corners

Resistivity: 0.0172  $\Omega$  mm<sup>2</sup>/m

Density: 8.9 kg/dm<sup>3</sup>

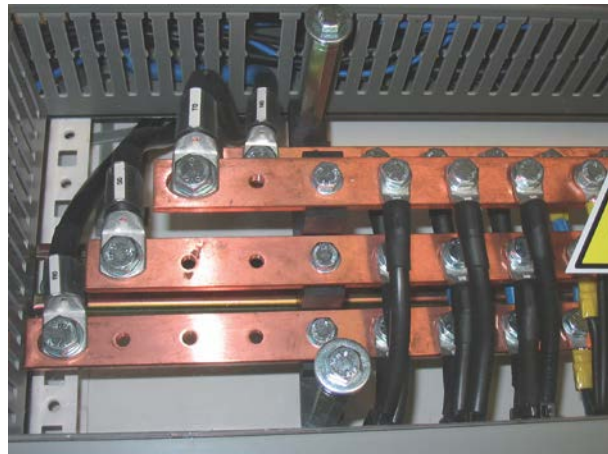
### Advantages

#### **Prepunched and threaded copper bars**

Ready to use

No need for punching tools

Wiring time savings



For derating coefficient for the use of bars in parallel please refer to the catalogue.

Please contact Teknomega for non-specified tolerances.