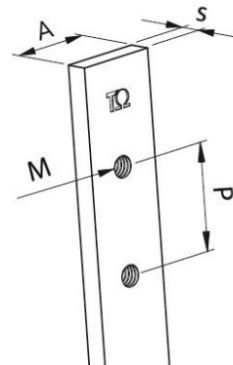
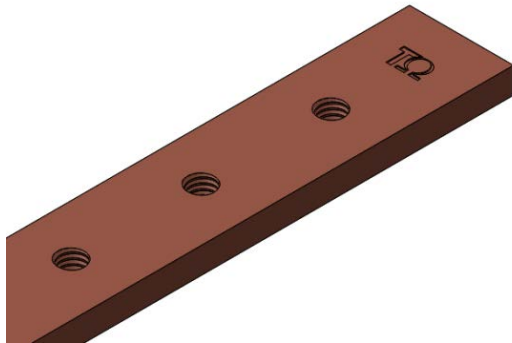


Product Datasheet BRF0990



Main

Family	Copper and Aluminium busbars		
Version	Threaded copper bars		
Code	BRF0990		
Reference	BRF 12X2X1000		
Number per package	10		
Weight (kg)	0.22		
Thickness (mm)	2		
Length (mm)	1000		
Dimensions (mm)	A = 12	s = 2	P = 18
Bolt size	M5		
Section (mm ²)	24		
In (A) vs ΔT*	In (A)	ΔT	
	117	35 °C	
	150	55 °C	
	171	70 °C	
	212	105 °C	

*Table of ampacities (A) are based on temperature rise ΔT with reference room temperature of 35 °C

Technical Characteristics

Electrolytic copper Cu-ETP 99.90%

Rounded corners

Resistivity: 0.0172 Ω mm²/m

Density: 8.9 kg/dm³

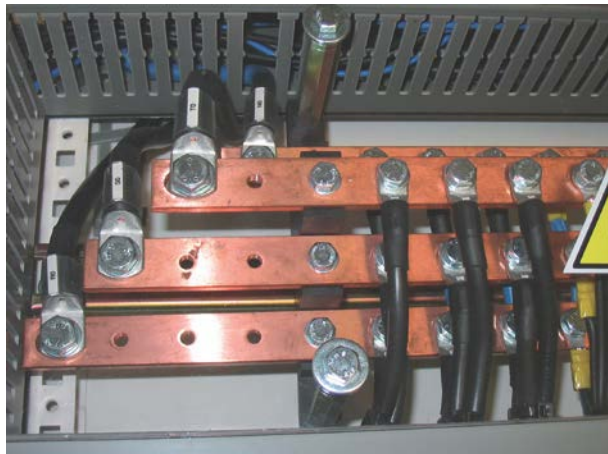
Advantages

Prepunched and threaded copper bars

Ready to use

No need for punching tools

Wiring time savings



For derating coefficient for the use of bars in parallel please refer to the catalogue.

Please contact Teknomega for non-specified tolerances.